

TESTIMONIALS

"Regarded by all as a model project, particularly for Health & Safety and collaboration."

- Dave Holland, Fonterra Co-operative Group

"Our experience in dealing with Apollo over the last 7 months has been one of professionalism and a pragmatic approach to the building process and build methodologies. They (Apollo) have run a well organised and managed site with a focus on keeping the site safe for all."

- Graham Kock, Project Delivery Manager, Foodstuffs (Auckland)

WE PROMISE CERTAINTY. TRUSTED EXPERTISE FROM A PROVEN SPECIALIST

"The design team Apollo assembled was first rate and contributed significantly to what has proven to be a first class facility. Apollo's performance in managing this design process was also to a very high standard. Apollo certainly excels... in the incorporation of buildability and construction input into the design process. This ensured that the majority of the design issues were clarified prior to the construction phase on site."

- Murray Darrall, Modernisation Manager, Property and Retail Development, Foodstuffs (Wellington) Co-operative Society Ltd



LEADING INTERGRATED DESIGN AND PROJECT DELIVERY SERVICES - SINGLE LINE ACCOUNTABILITY



Apollo
PROJECTS

DESIGN + CONSTRUCTION

apolloprojects.co.nz

North Island

Grant Black
Business Development Manager
p. 07 850 0300
m. 0274 851 330
e. grant.black@apolloprojects.co.nz

Apollo

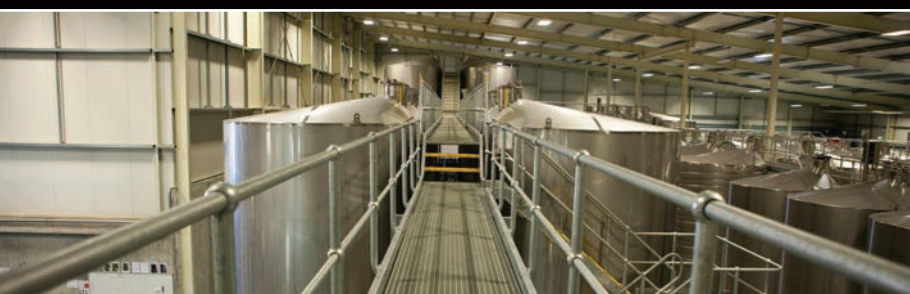
PROJECTS

South Island

Andrew Peti
Business Development Manager
p. 03 358 9185
m. 021 912 231
e. andrew.peti@apolloprojects.co.nz

Specialists in Design & Construction

Food & Beverage Processing Facilities



NEW ZEALAND OWNED AND OPERATED - OVER 40 PROFESSIONAL AND SUPPORT STAFF NATIONWIDE

APOLLO'S PROMISE

- Specialised – detailed understanding of every aspect of design and delivery
- Total Project Solution – from concept design to construction and facility handover
- Industry-leading – design and procurement methodologies
- Client Focussed - the client's objectives lead the design
- Innovative Thinking – challenging the status quo
- Trust and Expertise – our reputation is everything
- Track Record – for delivery of projects on time and within budget



DIVERSE EXPERIENCE, MULTI - DISCIPLINED BACKGROUNDS AND HIGHLY SPECIALISED KNOWLEDGE OF THE LATEST TECHNOLOGIES AND DESIGN SOLUTIONS

We offer a 'One Stop Shop' – fully integrated delivery solution tailored to the individual client, including:

- Initial Planning and Strategy – Early Contractor Involvement (ECI)
- Budgets and Feasibility
- Design Management
- Quantity Surveying
- Consents and Approvals
- Procurement and Cost Control – supply agreements with key project partners
- Construction Management
- Health and Safety
- Commission, Training and Handover



HEALTH & SAFETY

OUR CORE VALUE SAYS IT ALL – 'SAFETY ABOVE ALL ELSE', AND WE MEAN IT! WE HAVE WORKED WITH SOME OF THE MOST INTENSIVE H&S PROGRAMMES IN NZ AND WE WOULD PUT OUR REPUTATION UP AGAINST ANYONE

TURNKEY DESIGN AND BUILD - BEING INVOLVED IN THE EARLY DESIGN AND MANAGING THE FULL CONSTRUCTION PROCESS IS WHAT SETS US APART

Apollo has a diverse working knowledge of the various production techniques utilised throughout food and beverage manufacturing. From a one-off production to batch, mass and continuous flow production, Apollo understands what is required when designing 'fit for purpose' and highly efficient process intensive facilities.

Apollo is committed to providing comprehensive, innovative and world class services to the food and beverage processing sector. In providing this service, Apollo considers the challenges presented by:

- Resource & Building Consent application and management
- Reducing supply chain costs
- Environmental sustainability
- Wastewater treatment
- Structural, thermal and hygiene building design
- Fire protection
- New and emerging technologies for food grade and cleanroom environments
- Good Manufacturing Practices (GMP)
- Process and storage risk
- Chiller, freezer and controlled atmosphere solutions
- Process flow design and systems
- Coordination with process vendor and system operators
- Rising energy costs
- Globalisation and the need to provide world-class solutions at competitive prices

