

Easy and accurate detection system for microorganisms!

SHEET MEDIUM

AOAC PTM Approval

# Sanita-kun



Sanita-kun is a ready-to-use dry sheet medium with self-diffusible non-woven fabric

Small amount of waste

Saving culture space

Ready-to-use

**Easy operation**

Only sample preparation

**Accurate**

Excellent correlation with standard methods

Long shelf life

Portable

Adaptation for multiple purpose

**JNC CORPORATION**

<http://www.jnc-corp.co.jp/sanita/>

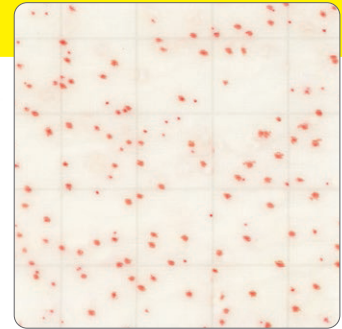
## Aerobic Count

AOAC PTM Approval



All aerobic microorganisms grow as red colored colonies.  
(Redox indicator dye generates red color development through the microbial metabolisms.)

Culture condition 35°C, 48 hr.



## Coliform

AOAC PTM Approval



Coliforms are detected as blue/green colored colonies.  
(Chromogenic substrate for  $\beta$ -galactosidase generates blue/green color development.)

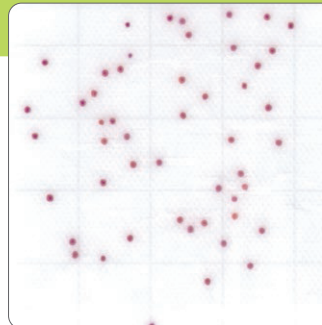
Culture condition 35°C, 24 hr.



## Yeasts & Molds



Yeasts & molds are detected as red or sporangium colored colonies.  
(Redox indicator dye generates red color development.)  
Culture condition 25°C, 48-72 hr.  
Xerophilic fungi can also be grown in case of long incubation period (more than 3 days).



Yeast



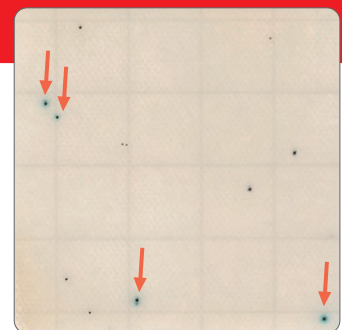
Mold

## Staph. aureus



*Staphylococcus aureus* is detected as blue colonies with black center or dark green colonies (red arrows).  
(Specific chromogenic substrates for *S.aureus* generates blue color development.)

Culture condition 35°C, 24 hr.



## E.coli / Coliform

AOAC PTM Approval

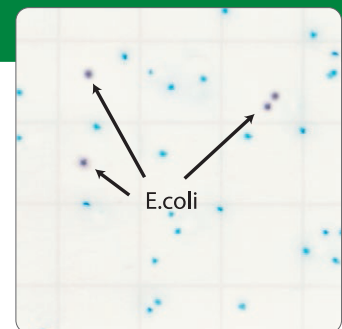


*Escherichia coli* and coliforms are detected as indigo/purple and blue/green colored colonies simultaneously.

Chromogenic substrates for  $\beta$ -glucuronidase and  $\beta$ -galactosidase indicate *E. coli* and coliforms, respectively.

※ *E.coli* O157 is detected as coliforms because of lacking of  $\beta$ -glucuronidase.

Culture condition 35°C, 24 hr.

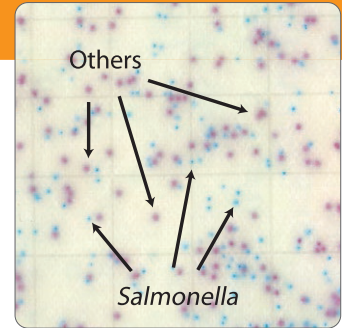


## Salmonella



*Salmonella* is detected as light-blue colored colonies by chromogenic substrate for  $\alpha$ -galactosidase. (Other than light-blue colonies are not *Salmonella*, for example purple to dark indigo colored colonies.)

Culture condition 35°C, 24 hr.

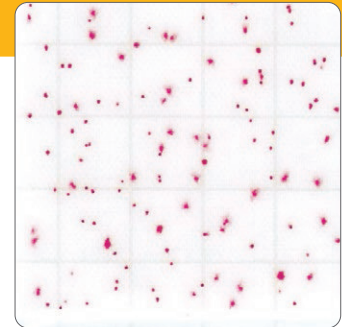


## Aerobic Count Rapid Type



All aerobic microorganisms grow as red colored colonies. (Custom made high sensitive indicator dye generates red color development within 24 hr of culture.)

Culture condition 35°C, 24 hr.



**Sanita-kun Aerobic Count, Coliform and E.coli/Coliform were approved as the Performance Tested Methods<sup>SM</sup> by the AOAC Research Institute.**

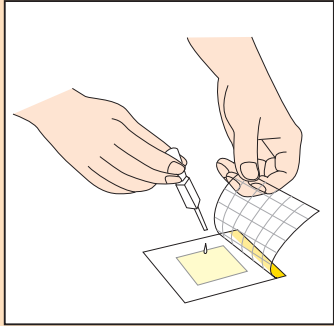
Sanita-kun Aerobic Count, Coliform and E.coli/Coliform were validated their performances by the AOAC Research Institute and were found to perform to the specifications as stated in the test kit's descriptive insert.

### What is the AOAC ?

The AOAC (AOAC International) is a nonprofit organization in the USA, in which approximately 5000 analytical scientists from more than 90 countries of all over the world collaborate each other to validate the new technology to analyze foods, medicines, fertilizers, feeds, cosmetic, etc. Because the validation in the AOAC is carried out very severely, the AOAC approved methods are automatically recognized as official methods not only in the USA but also in other countries.

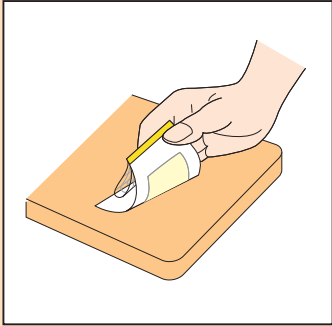
Also, AOAC Research Institute validates performances of commercial test kits. The only test kits filled all requirements from AOAC Research Institute can obtain the certification of *Performance Tested Methods* (PTM). Therefore, the test kits obtained PTM are known as useful alternatives.

● **Test Application** Sanita-kun can be applied to multiple usage for your purposes.



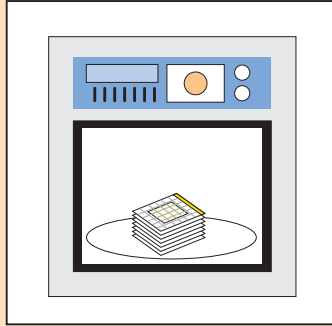
**Inoculation of sample solution**  
Open the cover film of Sanita-kun and apply sample solution on the self-diffusible non-woven fabric portion.

Sanita-kun can be available for Swabbing test, Air quality test, Membrane filter method and etc.



**Direct stamping**  
Get the non-woven fabric wet of with 1.0mL sterile physiological saline or an equivalent and then stamp it on the subject.

➔

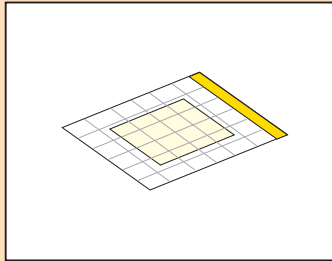


**Culture condition**

Aerobic Count	: 35°C 48hr
Coliform	: 35°C 24hr
Yeasts & Molds	: 25°C 48-72hr
Staph.aureus	: 35°C 24hr
E.coli/Coliform	: 35°C 24hr
Salmonella	: 35°C 24hr
Aerobic Count Rapid Type	: 35°C 24hr

● **The precautions for use**

- Sanita-kun is intended for daily microbiological hygiene control.
- Sanita-kun shall not be utilized as a clinical diagnostics.
- Positive colony on Sanita-kun should be confirmed by biochemical or serological tests.
- Used Sanita-kun must be disinfected by autoclaving before discarding.
- Stock the aluminum Sanita-kun bag at 2-15°C.  
After opened, use all of the plates within a month.  
(In case of room temperature, unopened Sanita-kun can be stored for 3 months.)
- We cannot guarantee the quality of the sheet after the expiration date.
- Enzyme derived from foodstuff sometimes makes fabric stained.
- Use the Sanita-kun after reading the instruction manual well.

**Judgment**

Count the specific colored colonies.  
When you feel difficulty in counting many colonies you can count them in some grid areas.  
Then you can multiply the numbers with factors.  
For example, multiply 20 when you count only 1 grid area.

● **Package**

<span style="color: yellow;">■</span> Aerobic Count	100pcs 1000pcs
<span style="color: cyan;">■</span> Coliform	100pcs 1000pcs
<span style="color: lightgreen;">■</span> Yeasts & Molds	100pcs 1000pcs
<span style="color: red;">■</span> Staph. aureus	100pcs 1000pcs
<span style="color: green;">■</span> E.coli/Coliform	100pcs 1000pcs
<span style="color: orange;">■</span> Salmonella	100pcs 1000pcs
<span style="color: gold;">■</span> Aerobic Count Rapid Type	100pcs 1000pcs

Manufactured by

**JNC CORPORATION**

2-1 Otemachi, 2-chome,  
Chiyoda-ku, Tokyo 100-8105 Japan

Phone: +81-3-3243-6225 Fax: +81-3-3243-6219

